

Sixth Annual IIASA-DPRI Forum on
Integrated Disaster Risk Management: Risks and Challenges for Business and Industry (IDRiM 2006)
August 13-17, 2006, Istanbul, Turkey

FLOODS

Tuesday, 1:50-3:50 pm, Topkapi - B

Chair: Charles Scawthorn

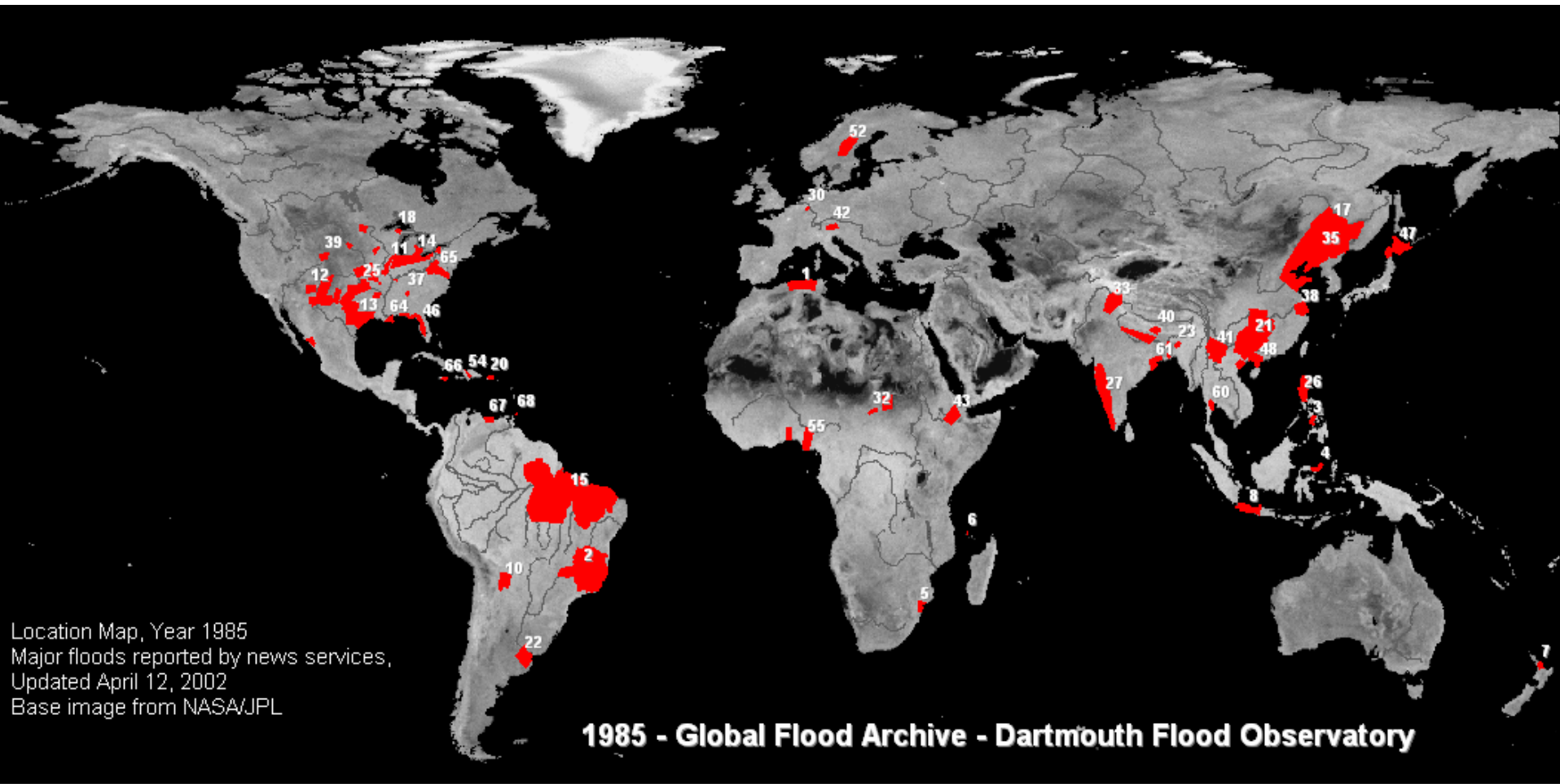
*Professor of Lifeline Earthquake Engineering
Kyoto University
Kyoto, Japan*

Rapporteur: Ufuk Hancilar

Bogazici University, Istanbul



GLOBAL FLOODS: 1985-2005



Location Map, Year 1985
Major floods reported by news services,
Updated April 12, 2002
Base image from NASA/JPL

1985 - Global Flood Archive - Dartmouth Flood Observatory



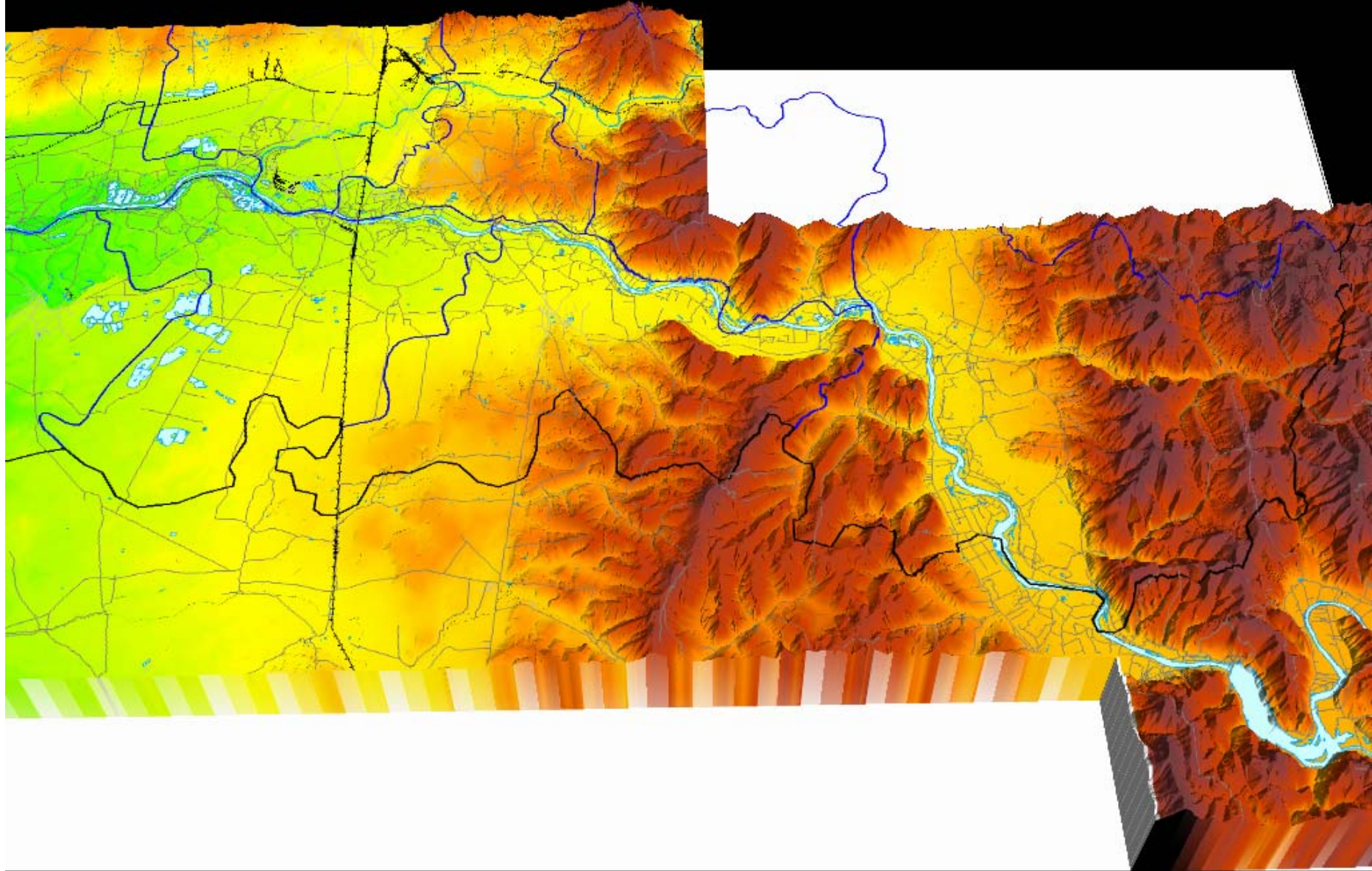


RESEARCH LABORATORY FOR LIFELINE ENGINEERING / EARTHQUAKE DISASTER PREVENTION SYSTEMS
DEPARTMENT OF URBAN MANAGEMENT, KYOTO UNIVERSITY
C. SCAWTHORN, 2005

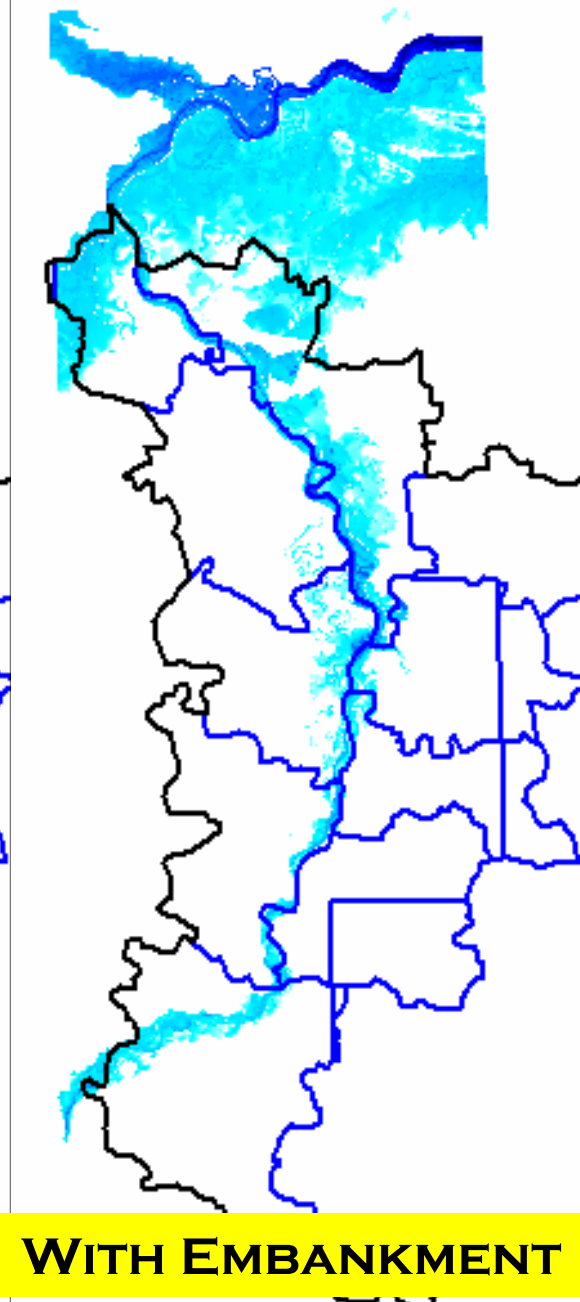
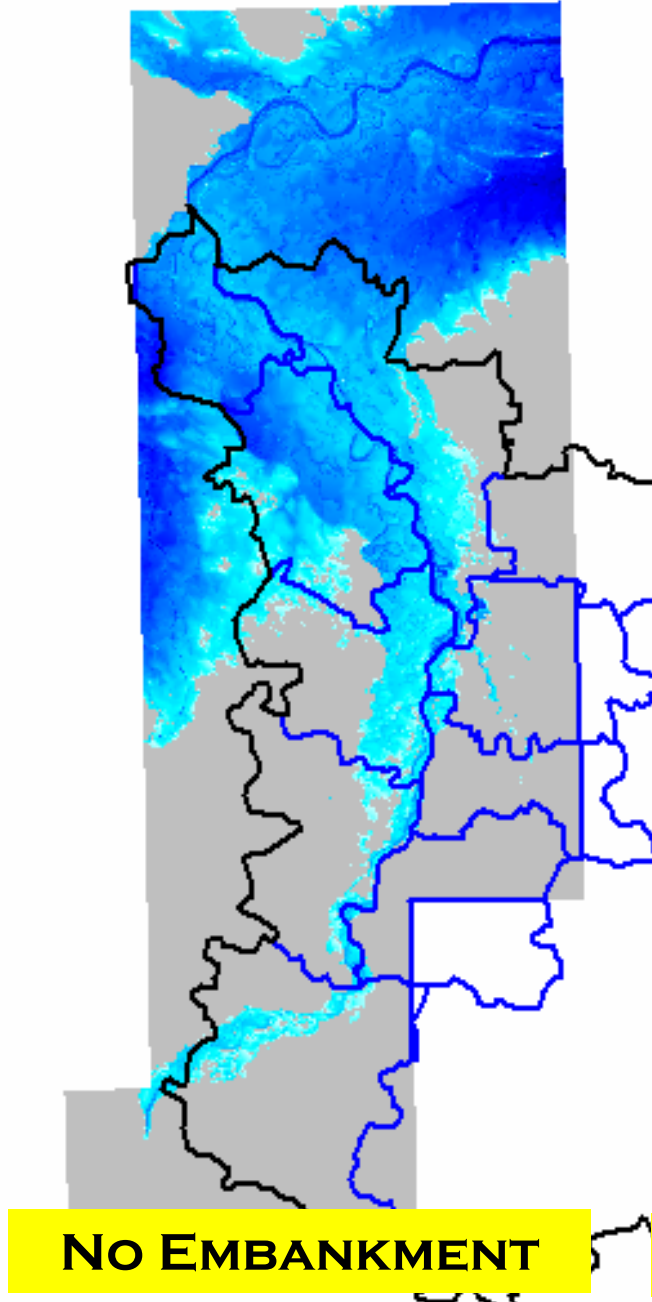
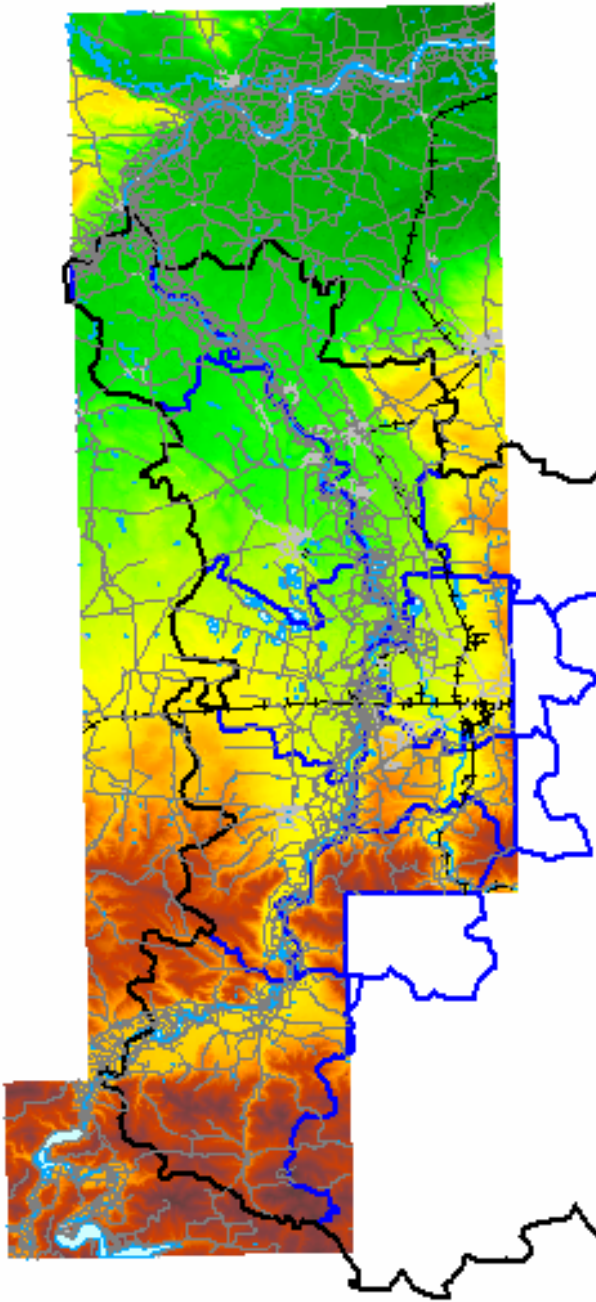




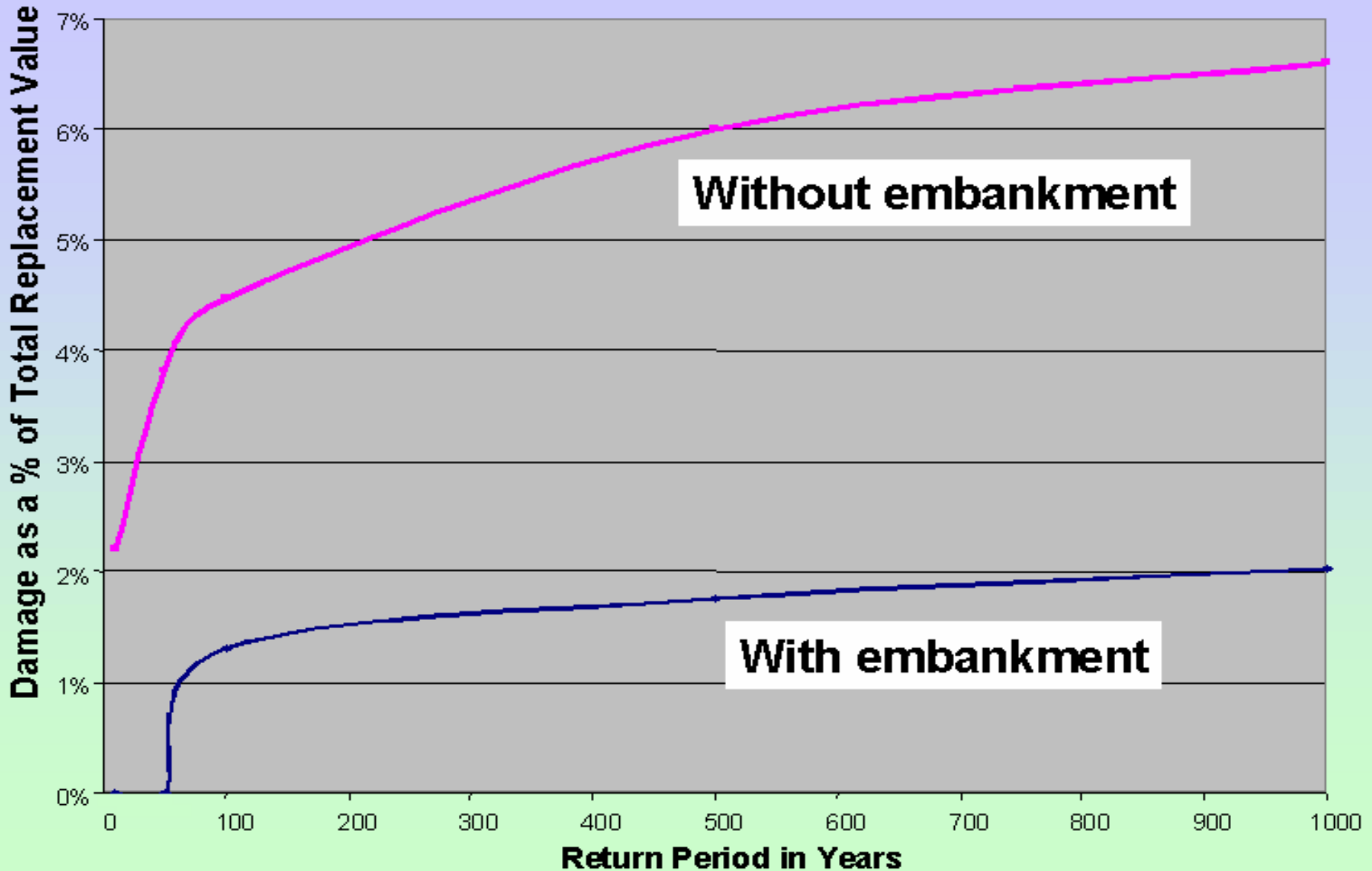
GIS Data of Study Region



0.001 ANNUAL PROBABILITY EXCEEDANCE (“1,000” YEAR FLOOD)



FLOOD DAMAGE LOSS EXCEEDANCE CURVES



SPECIAL ISSUE: Multihazards Loss Estimation and HAZUS

SPECIAL ISSUE EDITOR: Charles Scawthorn

May 2006
Volume 7, Number 2

ISSN 1527-6988
CODEN: NHREPO

39 Natural Hazards—The Multihazard Approach
Charles Scawthorn, Philip J. Schneider, and Barbara A. Schauer

Technical Papers

40 HAZUS—Its Development and Its Future
Philip J. Schneider and Barbara A. Schauer

45 HAZUS Earthquake Loss Estimation Methods
Charles A. Kircher, Robert V. Whitman, and William T. Holmes

60 HAZUS-MH Flood Loss Estimation Methodology. I: Overview and Flood Hazard Characterization
Charles Scawthorn, Neil Blais, Hope Seligson, Eric Tate, Edward Mifflin, Will Thomas, James Murphy, and Christopher Jones

72 HAZUS-MH Flood Loss Estimation Methodology. II. Damage and Loss Assessment
Charles Scawthorn, Paul Flores, Neil Blais, Hope Seligson, Eric Tate, Stephanie Chang, Edward Mifflin, Will Thomas, James Murphy, Christopher Jones, and Michael Lawrence

82 HAZUS-MH Hurricane Model Methodology. I: Hurricane Hazard, Terrain, and Wind Load Modeling
Peter J. Vickery, Jason Lin, Peter F. Skerlj, Lawrence A. Twisdale Jr., and Kevin Huang

94 HAZUS-MH Hurricane Model Methodology. II: Damage and Loss Estimation
Peter J. Vickery, Peter F. Skerlj, Jason Lin, Lawrence A. Twisdale Jr., Michael A. Young, and Francis M. Lavelle



Total
0
3,990
0
196
14
0
513,315
517,515
517,515



PROCESS

- **FLOOD DISASTERS**
- **ANALYSIS OF THE PROBLEM**
- **COMMUNICATION OF THE RISK**
- **MITIGATION**



FLOODS SESSION

- **USACE Response to Hurricanes Katrina and Rita**

I. Adiguzel, USACE Construction Engg. Research Lab., USA

- **Economic Hotspots: Visualizing vulnerability to flooding**

A. van der Veen, C. Logtmeijer, Dept. Public Policy, U. Twente, The Netherlands

- **A Flood Risk Communication Support System to Promote Safe Autonomous Evacuation**

M. Hatayama, K. Kawashima, H. Tatano, DPRI, Kyoto University, Japan

- **An Improvement and actual condition about gap between preparedness behavior and risk perception for flood disaster**

A. Takagi, Y. Amao, Dept. Civil Engg., Gifu University, Japan

- **Flood-Risk Information Communication with PAFRICS**

Y. Takeuchi, I. Suzuki, T. Sato, T. Fukuzono, DPRI, Kyoto University, Japan



SESSION FORMAT

- PRESENTATION: 15 MINUTES
 - SPECIFIC Q&A: 5 MINUTES
 - SESSION DISCUSSION: 20 MINUTES
-
- **USACE Response to Hurricanes Katrina and Rita**
I. Adiguzel, USACE Construction Engg. Research Lab., USA

