

Key messages on employment dynamics in leading and lagging rural regions of the EU

Presentation by

Ida Terluin and Jaap Post

Agricultural Economics Research Institute LEI

P.O. Box 29703, NL-2502 LS The Hague, Netherlands

E-mail: i.j.terluin@lei.wag-ur.nl / j.h.post@lei.wag-ur.nl

Key messages on employment dynamics in leading and lagging rural regions of the EU

Plan of this presentation:

- 1 Objectives of the RUREMPLO project
- 2 Territorial approach of rural
- 3 Leading and lagging regions in the EU
- 4 Key messages on employment creation

RUREMPLO

RUREMPLO is the acronym of:

‘Agriculture and employment in rural regions of the EU’

Central question:

What can lagging rural regions learn from leading rural regions in the field of employment creation?

Two parts of the RUREMPLO project:

1 A quantitative analysis of socio-economic characteristics in all EU regions , 1980-1995

2 18 case studies in “leading” and “lagging” rural regions in 9 EU member states

Participating countries: NL, GER, IT, GR, FR, SP, BE, FIN and AUS

Rural region

A territorial entity

- which covers a regional economy with agricultural, industrial and services activities
- with a low population density
- with one or more small or medium sized towns,
- and with a large area of open space.

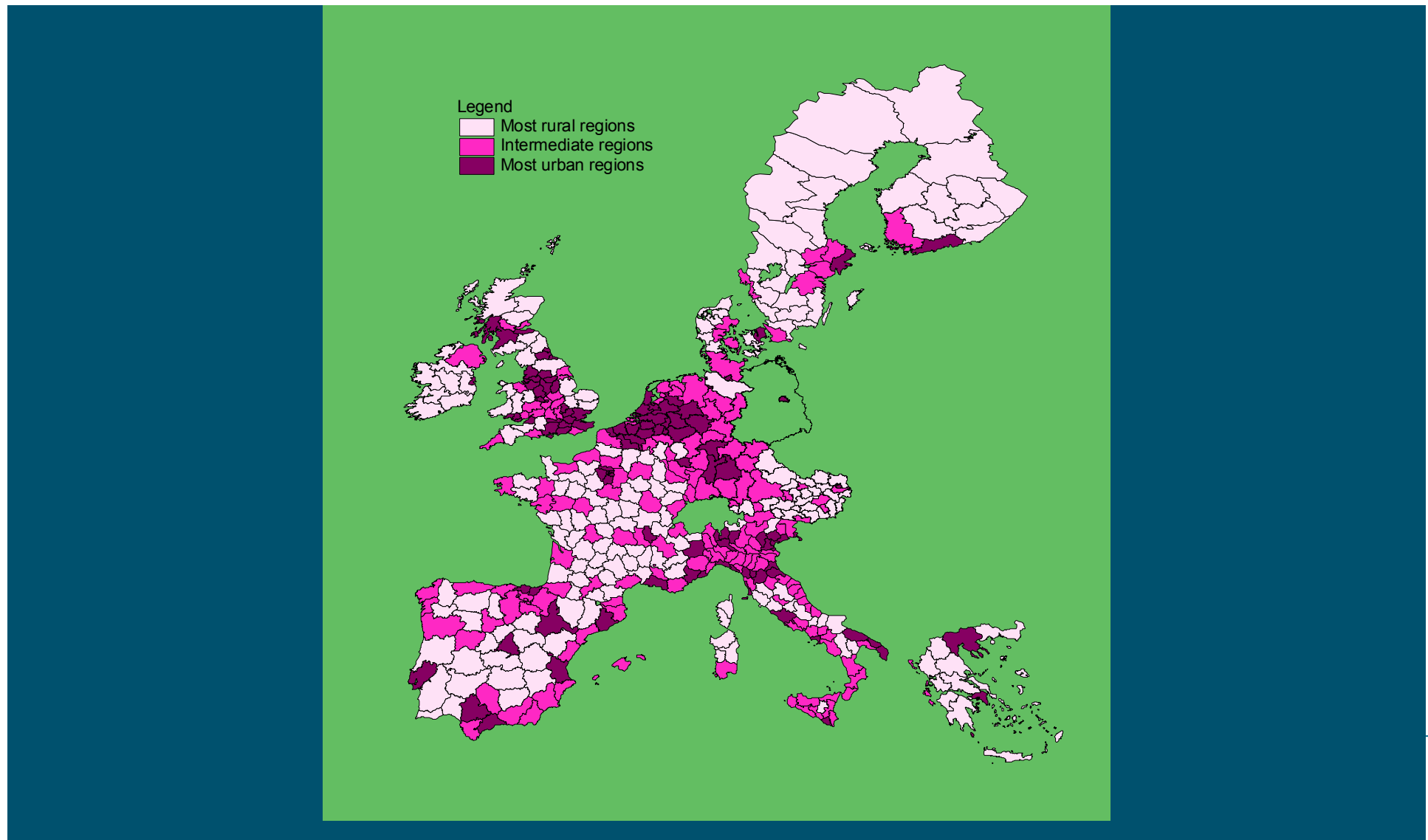
Size: labour market area

Classification of EU 15 regions

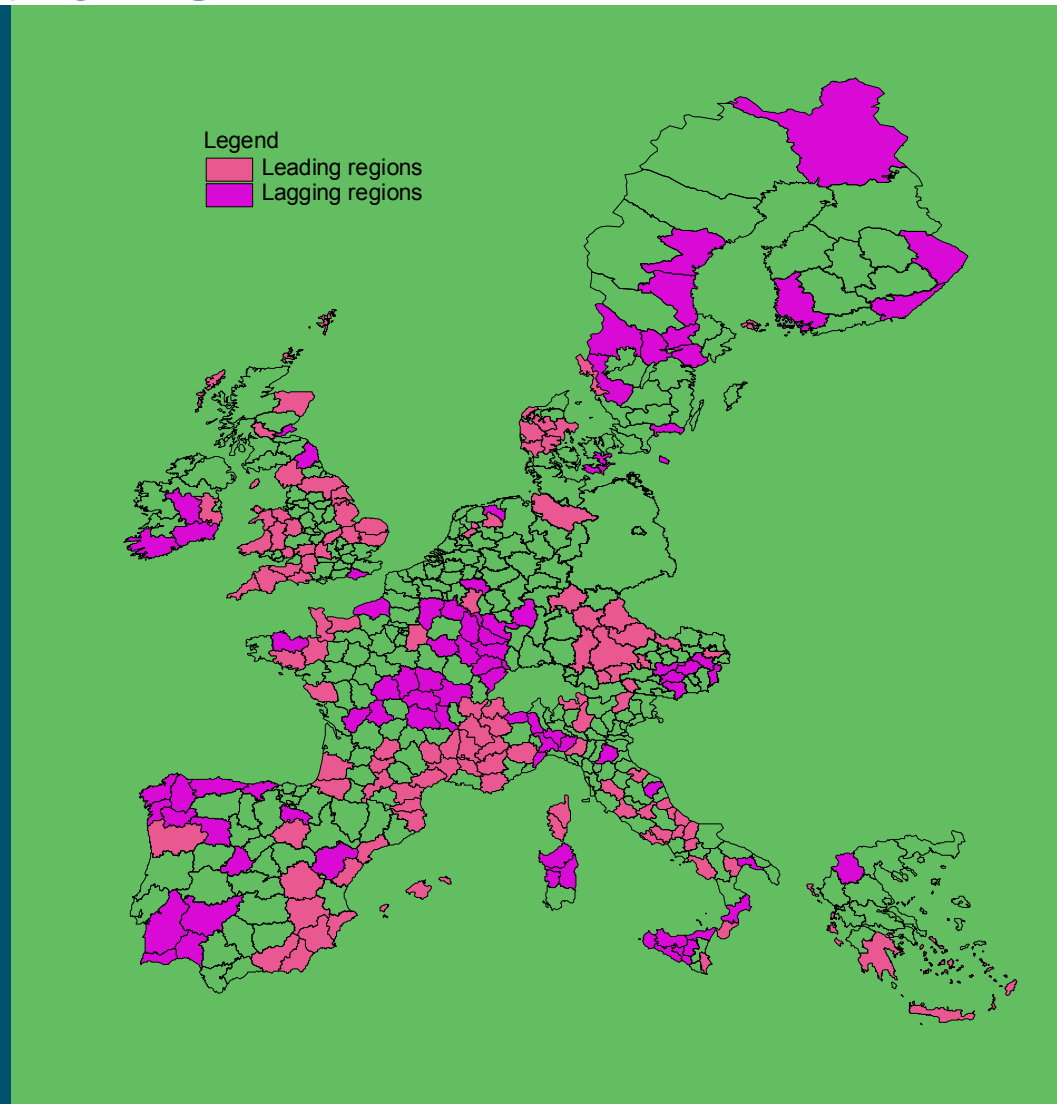
based on population density and employment growth

Degree of rurality	Number of regions	Percentage
Most rural regions	195	42
<i>of which:</i>		
- leading	58	12
- lagging	49	11
Intermediate regions		
<i>of which:</i>	164	35
- leading		12
- lagging	57	8
	36	
Most urban regions		
	106	23
Total	465	100

Rural and urban regions in the EU



Leading and lagging most rural and intermediate regions in the EU



In the period 1980-1995 leading rural regions in the EU had

- Growth of industrial and services employment
- Lower unemployment rates
- Higher infrastructure endowment

What about population growth?

'1980-1993' (% p.a.)

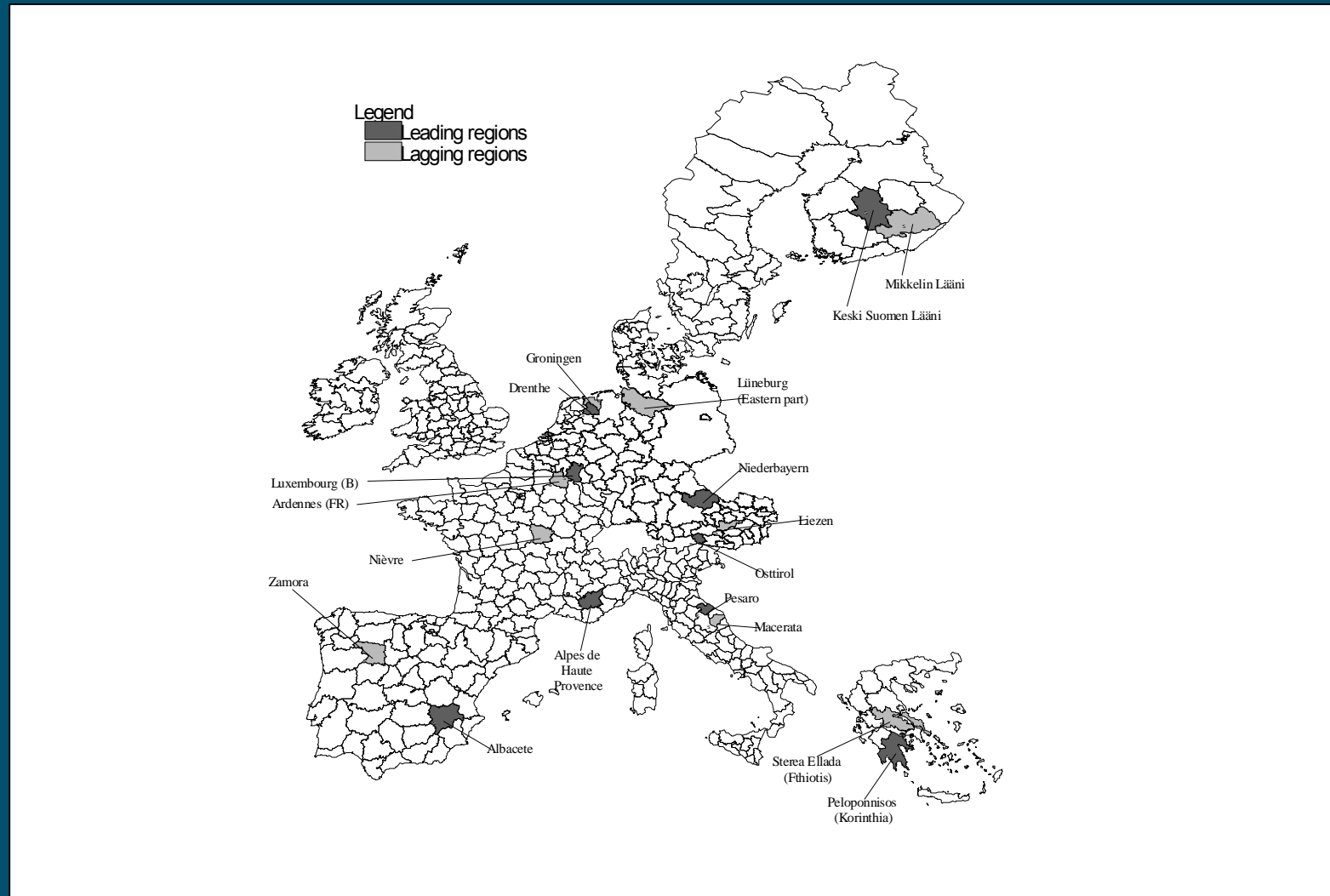
Regions	Employment growth	Population growth
Leading most rural	0.8	0.51
Leading intermediate	1.0	1.09
Lagging most rural	-0.7	-0.06
Lagging intermediate	-0.7	0.06
Most urban	0.5	0.32
All regions	0.4	0.37

Focus on 18 case studies

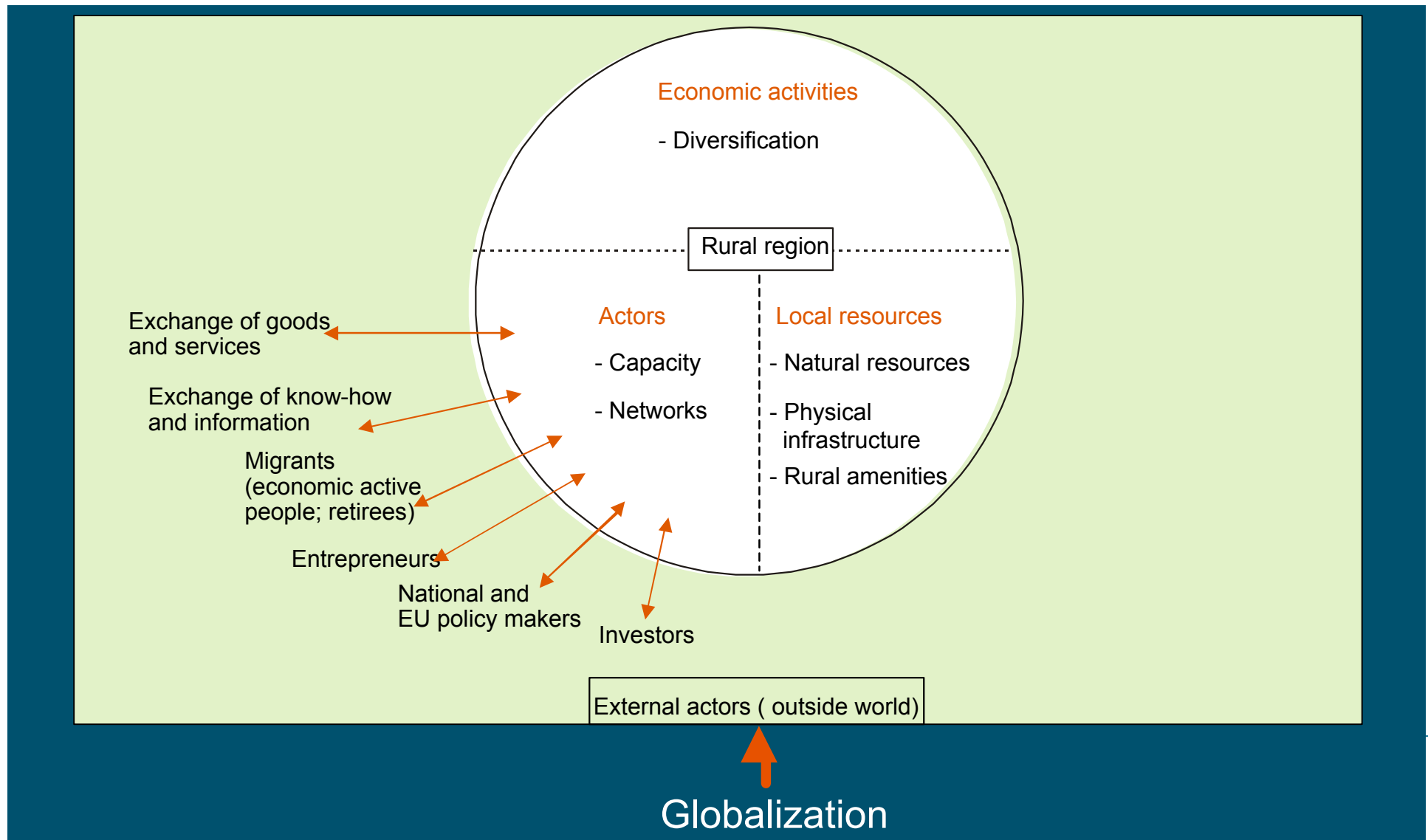
Analysis of process of employment creation by using a

field of force of a rural region

Selection of regions for case studies



Conceptual model: field of force of a rural region



Local resources

Both leading and lagging regions are endowed with natural resources and rural amenities

Lessons

- Valorize rural amenities;
- Improve the perception of amenities by rural actors.

Local resources

Infrastructure in leading regions often better developed

Lesson

Integrate infrastructure investment in a broader development process

Economic activities

Leading regions show both growth in industrial and services employment

Lessons

Follow a multisectoral approach

Tourism is not the only solution

Both diversification and specialization can be successful strategies

Lessons with regard to economic activities (continued)

Enhance facilities for new and small enterprises;

Strengthen zoning of economic activities by spatial planning.

Actors

Leading regions involve a wide range of actors

Higher capacity in leading regions

Lesson

- Improve capacity of local actors

Actors

Stronger internal networks in leading regions

Enhanced by:

- An active attitude of local actors
- Solidarity
- Easy communication
- Strong local leaders

Actors

Stronger external networks in leading regions

Used for:

- Getting financial support from higher policy level
- Exporting products
- Being in contact with (multinational) firms

Lesson

- Strengthen internal and external networks

Actors

A few lagging case study regions had a decline in population

Leading regions	period	growth	lagging regions	period	growth
Luxembourg (B)	'81-'91	0.5	<i>Ardennes (FR)</i>	'82-'90	-0.3
Niederbayern (GER)	'82-'92	0.9	Lüneburg (GER)	'80-'90	0.1
Korinthia (GR)	'81-'91	1.4	Fthiotis (GR)	'81-'91	0.6
Albacete (SP)	'80-'95	0.6	<i>Zamora (SP)</i>	'80-'95	-0.2
Alpes de Haut-Prov. (FR)	'82-'96	1.2	<i>Nièvre (FR)</i>	'82-'90	-0.3
Pesaro (IT)	'80-'93	0.1	Macerata (IT)	'80-'93	0.2
Drenthe (NL)	'80-'96	0.6	Groningen (NL)	'80-'96	0.05
Osttirol (AUS)	'81-'91	0.2	Liezen (AUS)	'81-'91	0.4
Keski-Suomen L. (FIN)	'80-'95	0.4	<i>Mikkeli L. (FIN)</i>	'80-'95	-0.1

Actors

Leading case study regions tend to have a positive immigration balance

Lagging case study regions faced an outflow of students and economic active people

Actors

Role of newcomers:

- Help mobilising local actors
- Can provide access to external know-how and markets
- Act as local leaders

Lesson

Attract newcomers

LESSONS ARE NO 'SUCCES FORMULA'

General guideline for employment creation

- Improve the capacity of local actors;
- Strengthen the cooperation of actors inside and outside the region;
- Use a comprehensive territorial development plan.