

INDICATIVE CONDITIONS FOR APPOINTMENT ON RTN FUNDING

In the following schematic, the conditions under which a researcher can be appointed within a Research Training Network are described.



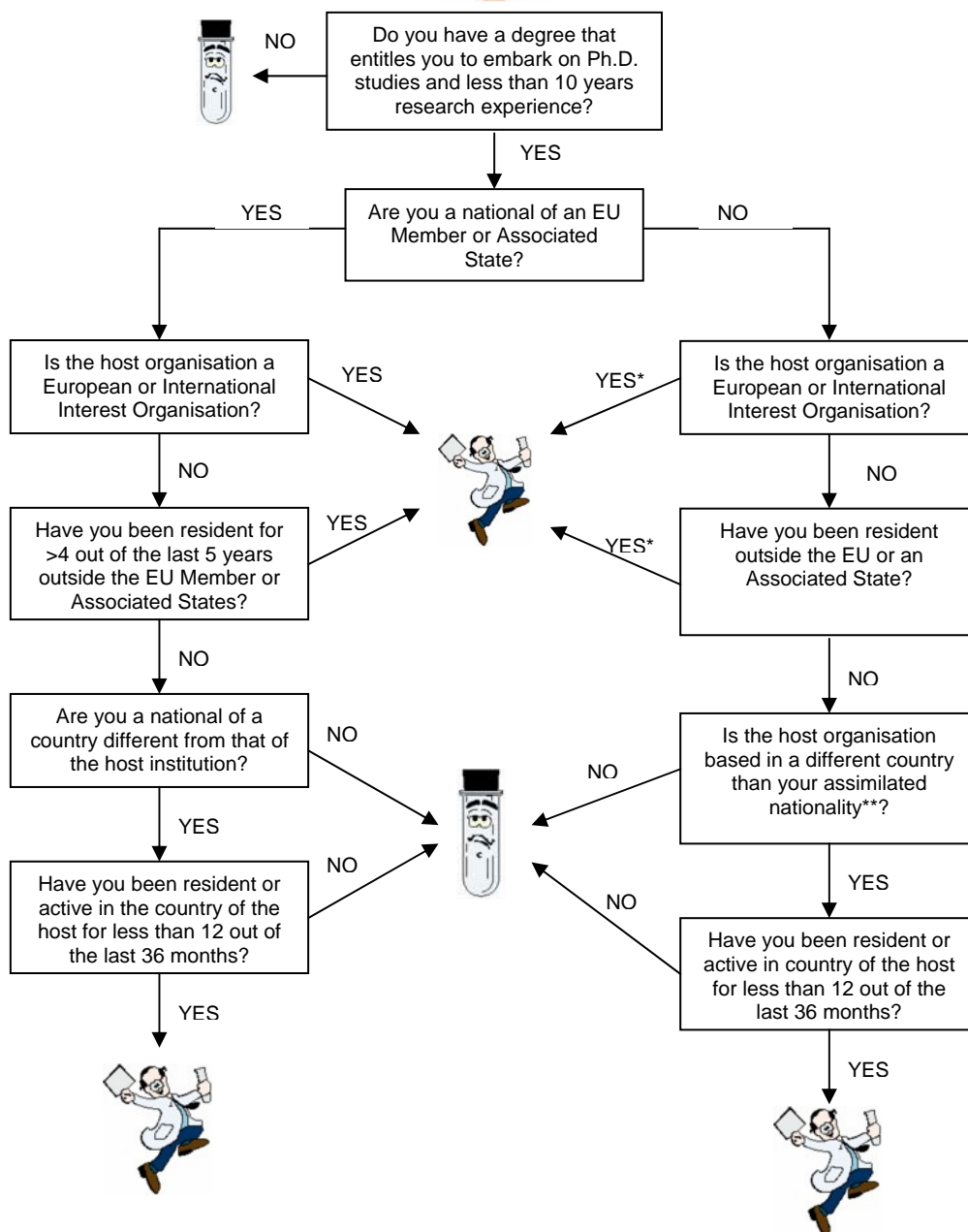
You might be eligible



You are probably not eligible



Can I apply?



*Within the 30% limit for the number of person-months for Third Country researchers.

**If you have resided at least 4 out of the last 5 years in a Member/Associated state you are treated as national of a Member/Associated State. The assimilated nationality refers to the nationality of the EU Member or Associated State in which you have resided the longest during the last 5 years.